

RINGTOP™

SLIM-LINE CHANNELIZER

TD7500 MODEL

**NCHRP350 CRASH TEST CERTIFIED
AND MEETS MUTCD STANDARDS**



FEATURES:

- Two piece stackable 42" cone and rubber base.
- Large opening for easy handling.
- MASH 2016 Compliant Category 1 Device.
- Recycled Content is 95% Post-Consumer Recycled Plastic Material.
- Available with 100% Post-Consumer Recycled Diamond Series rubber bases in 10lb, 15lb, 20lb, and 30lb weights.
- All sheeting is ASTM D4956 compliant. The TD7500 is shown in the photo above with 6" & 4" wide sheeting. Other sheeting size combinations are available.
- Channelizer is made from UV-stabilized LDPE/HDPE plastic material. Dioxin-Free!!!

NCHRP350 APPROVED: WZ-271

**All Sheeting Complies With
ASTM D4956 requirements.**

COLORS AVAILABLE:

The TD7500 Ringtop Stackable Cone is currently available in Orange and White.

GENERAL INFORMATION:

General information is listed on the reverse side. The measurements provided are intended only as a source of information. They are given without guarantee and are not classified as a warranty. A specification will be sent to you upon request.



Three D
TrafficWORKS
Innovative Traffic Safety Products



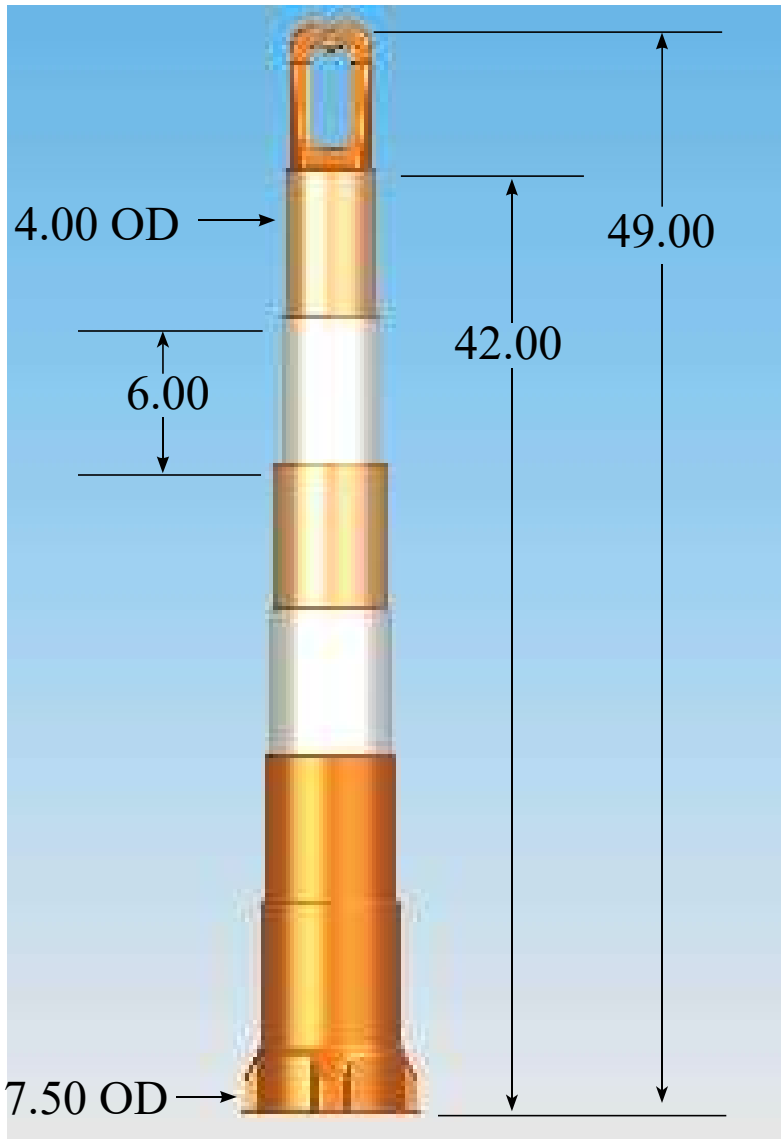
430 N. Varney St. Burbank, CA. 91502 Tel: 877 843 9757 Fax: 818 841 5096 Web: www.trafficwks.com
Email: sales@trafficwks.com Website: www.trafficwks.com



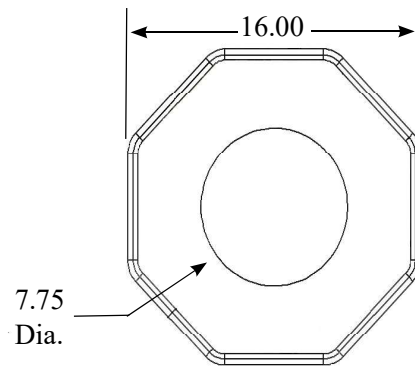
TD7500 MODEL
RINGTOP™ SLIM-LINE CHANNELIZER
SPECIFICATIONS

- **Dimensions:**
Width: Top 4.00"
Bottom 7.750"
Height: 42.00"
 - The TD7500 Ringtop™ Slim-Line Channelizer is a two-piece design consisting of a HDPE/LDPE tube and TD8000 Diamond Series 100% Post-Consumer Recycled Rubber Base.
- TD7500 Channelizer Tube material is 95% Post-Consumer Recycled Plastic material that contains no Dioxins.**

Two Base styles to choose from !!!



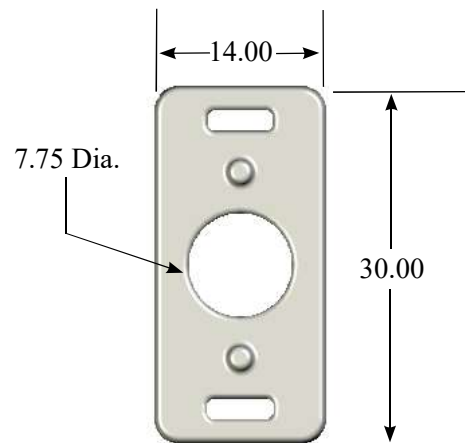
OCTAGONAL



Weight:
10 lb.
15 lb.

Thickness:
1.700
2.700

RECTANGULAR



Weight:
20 lb.
30 lb.

Thickness:
1.750
2.750

